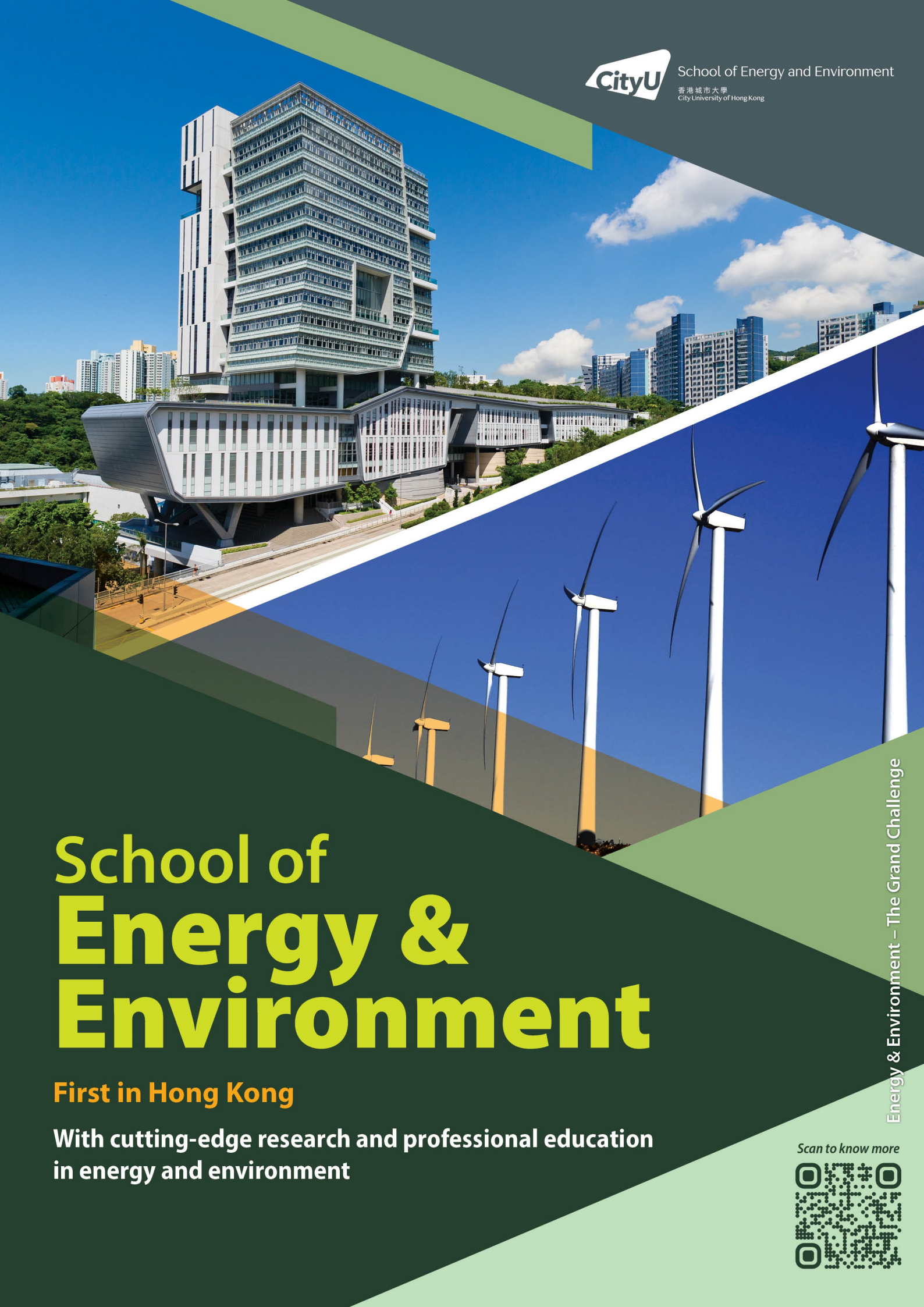




School of Energy and Environment

香港城市大學
City University of Hong Kong



School of Energy & Environment

First in Hong Kong

With cutting-edge research and professional education
in energy and environment

Energy & Environment – The Grand Challenge

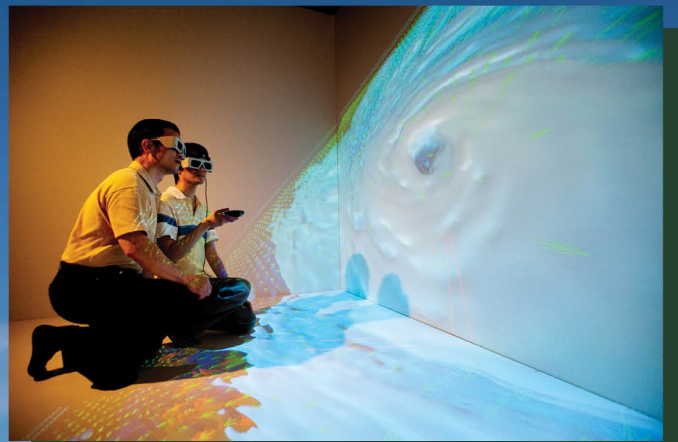
Scan to know more



Introduction

The School of Energy and Environment (SEE) – the first in Hong Kong was founded in July 2009 with the mission to perform cutting-edge research and provide professional education in energy - and environment-related issues. Never before have such issues become so important worldwide, and they are in fact on the top agenda of every region/country. The critical question is how enough energy can be produced to sustain economic growth while the effects on the environment in the production and use of energy can be minimised. Conversely, the carbon footprint in mitigating environmental problems must also be considered.

SEE is therefore designed to tackle this interactive relationship between energy and environment through the development of new scientific understanding and new technologies as well as the training of new professionals with broad knowledge in the areas of energy and environment.



Mission

- Advancing research and development, fostering knowledge transfer in targeted themes of benefit to societal needs in energy, environment, and sustainability;
- Preparing leaders and practitioners to address environmental and energy needs in a rapidly decarbonising world and build a sustainable future;
- Maintaining a collaborative and supportive atmosphere for students, faculty, alumni and other stakeholders in advancing our interdisciplinary research and educational objectives.

Accreditation

- Bachelor of Engineering in Energy Science and Engineering and Bachelor of Engineering in Environmental Science and Engineering have been granted accreditation by the Hong Kong Institution of Engineers (HKIE).
- Master of Science in Energy and Environment is accredited by the Institution of Gas Engineers and Managers (IGEM) and Chartered Institution of Water and Environmental Management (CIWEM). Graduates who have successfully completed the degree can partially fulfill the academic requirements* for registration as Chartered Engineer (CEng), UK.

* with an accredited BEng/BSc Degree from any of Washington Accord's 19 Signatories

We have a large interdisciplinary faculty with research expertise in atmospheric and climate science, biological science, chemistry, chemical engineering, energy economics, environmental engineering, environmental policy, mechanical engineering and materials science. Since its inception, the faculty has established several research groups and two research centres devoted to the development of fundamental and application-oriented research. On the educational front, we are offering one double degree programme, two undergraduate majors, three undergraduate minors, a taught postgraduate programme as well as PhD places for well-qualified students.

Academic Programmes

The School of Energy and Environment offers several academic programmes and courses to both undergraduate and postgraduate students, which provide them with the knowledge and skills in the areas of energy and environment, with special reference to the Asian setting.

Undergraduate Programmes

Double Degree Programme

- Bachelor of Engineering in Environmental Science and Engineering and Bachelor of Business Administration in Finance

Major Programmes

- Bachelor of Engineering in Energy Science and Engineering
- Bachelor of Engineering in Environmental Science and Engineering
- Bachelor of Science in Environment and Sustainable Business

Minor Programmes

- Minor in Atmospheric and Climate Science
- Minor in Energy Technology
- Minor in Sustainability

Gateway Education Courses

- Climate Change and Extreme Weather
- Energy: Today and Tomorrow
- Food Security and Sustainability
- Sustainable Energy and Environmental Engineering
- Urban Green City: Pollution and Solution
- Urban Sustainability in Hong Kong

Postgraduate Programmes

Research Degree Programme

- Master of Philosophy (MPhil)
- Doctor of Philosophy (PhD)

Taught Postgraduate Programme

- Master of Science in Energy and Environment

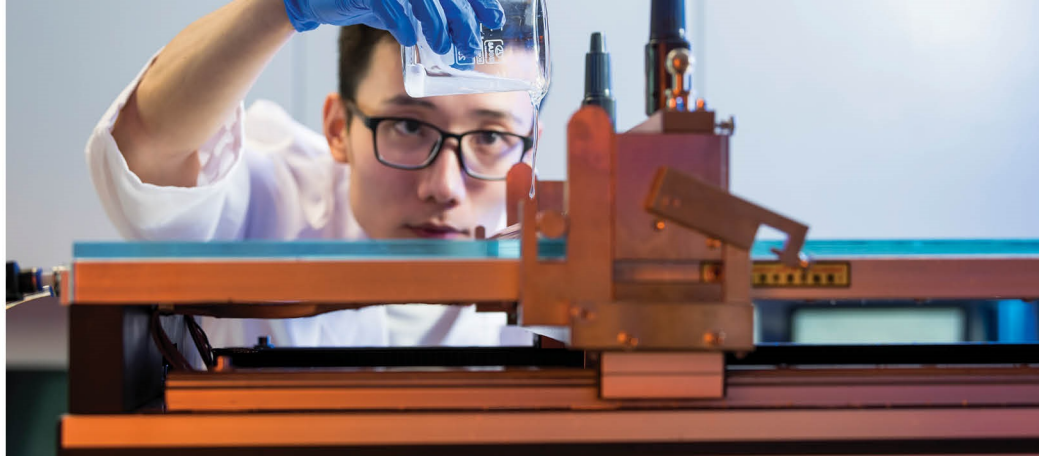


Student Exchange

The School of Energy and Environment has established exchange partnerships with institutions in various countries/regions.

Destination	Institution
France	INSA Lyon
Germany	Leibniz University of Hannover Ludwig-Maximilians-Universität München
South Korea	Ewha Womans University Hanyang University
Sweden	Chalmers University of Technology
Taiwan	University System of Taiwan





Research and Development

Our established research expertise in energy-& environment-related subjects are grouped in research teams to engage in and develop cutting-edge research. Current research areas include:

Energy

Conversion & Generation

Prof. Fatwa F. ABDI
 Prof. Sam H.-Y. HSU
 Prof. Alex KY JEN
 Prof. Patrick LEE
 Prof. Michael K. H. LEUNG
 Prof. Chunhua LIU
 Prof. Sai Kishore RAVI
 Prof. Jin SHANG
 Prof. Patrick SIT
 Prof. Edwin C.Y. TSO
 Prof. Jian WANG
 Prof. Xue WANG
 Prof. Zhenbin WANG
 Prof. Wei WU
 Prof. Charles Chunbao XU
 Prof. Angus Hin-Lap YIP

Efficiency & Storage

Prof. Guohua CHEN
 Prof. Xi CHEN
 Prof. Sam H.-Y. HSU
 Prof. Michael K. H. LEUNG
 Prof. Chunhua LIU
 Prof. Patrick SIT
 Prof. Edwin C.Y. TSO
 Prof. Jian WANG
 Prof. Xue WANG
 Prof. Zhenbin WANG
 Prof. Wei WU
 Prof. Charles Chunbao XU
 Prof. Angus Hin-Lap YIP
 Prof. Lin ZHANG

Environment

Atmospheric & Climate

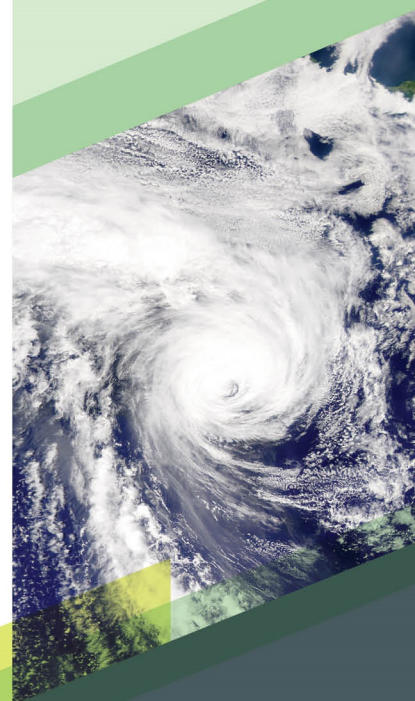
Prof. Jung-Eun CHU
 Prof. Jin-Soo KIM
 Prof. Patrick LEE
 Prof. Theodora NAH
 Prof. Yiming QIN
 Prof. Jin SHANG
 Prof. Xuan WANG
 Prof. Charles Chunbao XU
 Prof. Lin ZHANG

Water & Waste

Prof. Fatwa F. ABDI
 Prof. Guohua CHEN
 Prof. Shauhrat S. CHOPRA
 Prof. Liang DONG
 Prof. Henry Y. HE
 Prof. Sam H.-Y. HSU
 Prof. Jason C. H. LAM
 Prof. Kenneth LEUNG
 Prof. Carol LIN
 Prof. Theodora NAH
 Prof. Sai Kishore RAVI
 Prof. Xuneng TONG
 Prof. Wen-Xiong WANG
 Prof. Charles Chunbao XU
 Prof. Zhiguo YUAN AM

Sustainability and Policy

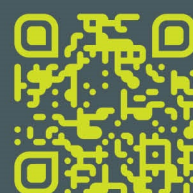
Prof. Shauhrat S. CHOPRA
 Prof. Xi CHEN
 Prof. Liang DONG
 Prof. Kenneth LEUNG
 Prof. Wanxin LI
 Prof. Carol LIN
 Prof. Lin ZHANG



In line with the mission of CityUHK, collaborative research activities with industries are being pursued in the joint development of new technologies, products and services. In addition, knowledge transfer activities as well as consultancies are encouraged.

For detail, please visit:

<http://www.cityu.edu.hk/see/research> ►



Contact Us

Address: G5703,5/F, Yeung Kin Man Academic Building (YEUNG),
 City University of Hong Kong, Tat Chee Avenue, Kowloon,
 Hong Kong SAR

Tel: (852) 3442 2412 (Bachelor's Degree Programmes)
 (852) 3442 2414 (MSc Energy and Environment and Research Degree Programmes)

Email: see.enquiry@cityu.edu.hk

Website: <http://www.cityu.edu.hk/see>